

INTERIOR CARPET:

Until 1977 all versions had the “rhombus pattern” black leather carpet:



After 1977 the material changed (I think it's still leather but different). The standard color was black and looked like this (sorry for bad resolution):



I think it's the one you already made.

Since 1977 there were options to have the same carpet color as the seats (but the feet things stayed black). For example beige here:



It was still the same material, so also orange and green were available. More pictures:





1985, new colors, foot things are now carpet colored. Blue:



Grey:



Écru color:



Until 1992 no changes, then base model stays black, higher trims blue or grey. I believe the foot things were carpet colored from factory unlike on the image because such a downgrade makes no sense:



Later it was just swapped that blue was base and black higher trim.

In 1996 last change, base model had this bluish grey color



And higher trim was back to black.



So to summarize, we need:

- Rhombus pattern leather black, the rest is the normal leather
- Beige, orange and green with black foot things
- Blue, grey, Écru, and bluish grey with carpet colored foot things

Not too much tbh. Maybe a roof carpet model that would use the same materials?

DASHBOARD:

Up until 1977 there was only black (plastic?) was available:



Since 1977 the 650L and 650K versions received an option for carpet colored dashboard, same colors: cream, orange or green.



1984 was the first facelift, new dashboard available in blue or grey with black gauges screen (no idea what material):



In 1993 this other blue (anthracite) replaced black:



And grey with black gauges screen was switched to higher trim. Next year they changed it back already lol.

And 1996 as you know they added bluish grey and the old black like on those pictures. New black dash:



So really for the dash there's not much:

- Old one black, cream, orange or green, all with black gauges screen
- New one blue, grey with black gauges, anthracite, bluish grey and black

DOOR PANELS

Until 1985 they had the same 4 colors as seats:





1985 the colors changed, and so did the design. It has fabric rather than leather. Black version:



Grey striped version:



Zoomed in material

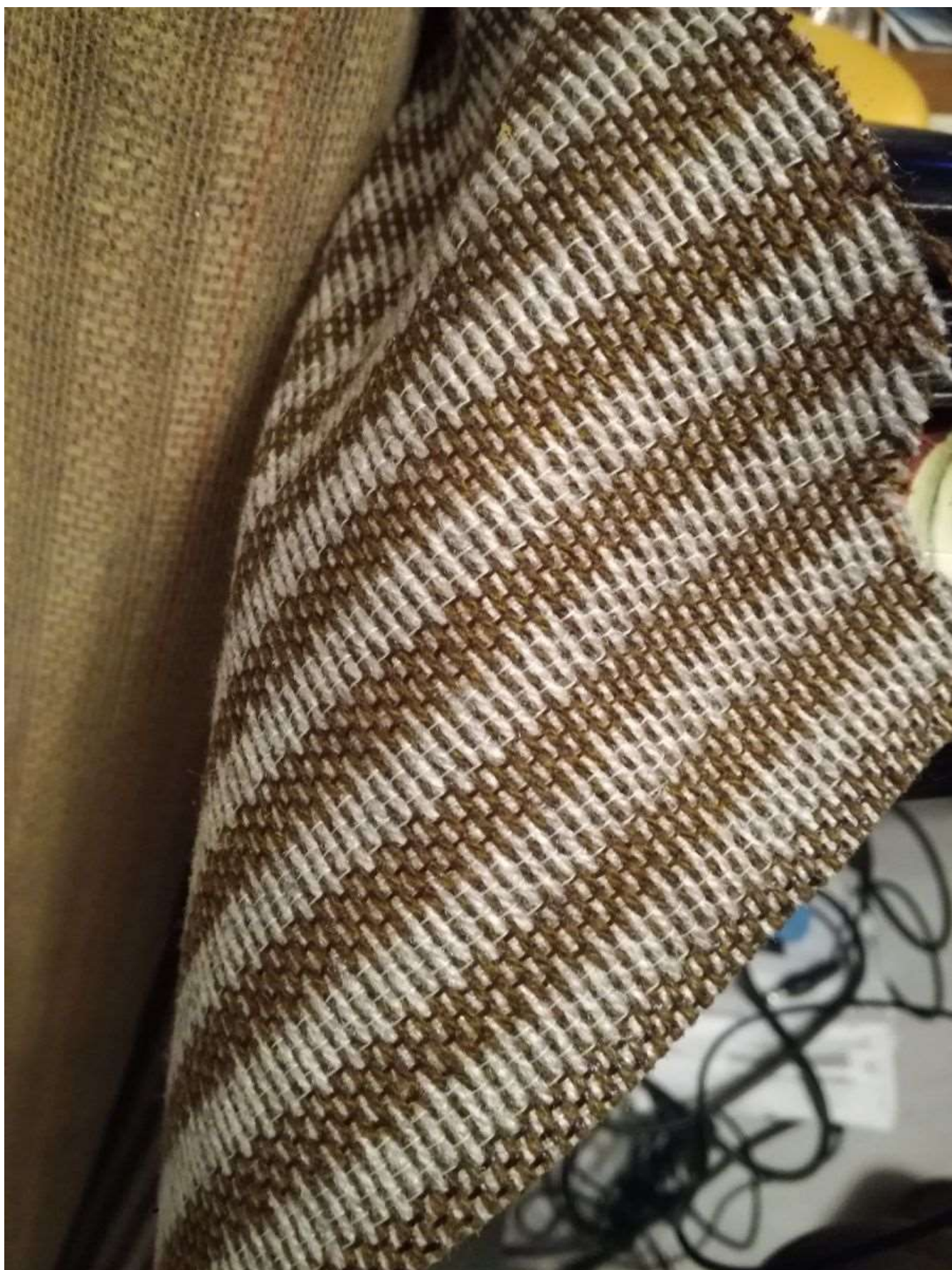


Écru with brown stripes:



Poor “transitional” trims still had leather, same colors but made differently, the colors would fade easily.

Last one very zoomed in:



In 1993 they just changed the black color to anthracite but the design stayed:



Pattern on grey color changed, no more stripes and different design too:



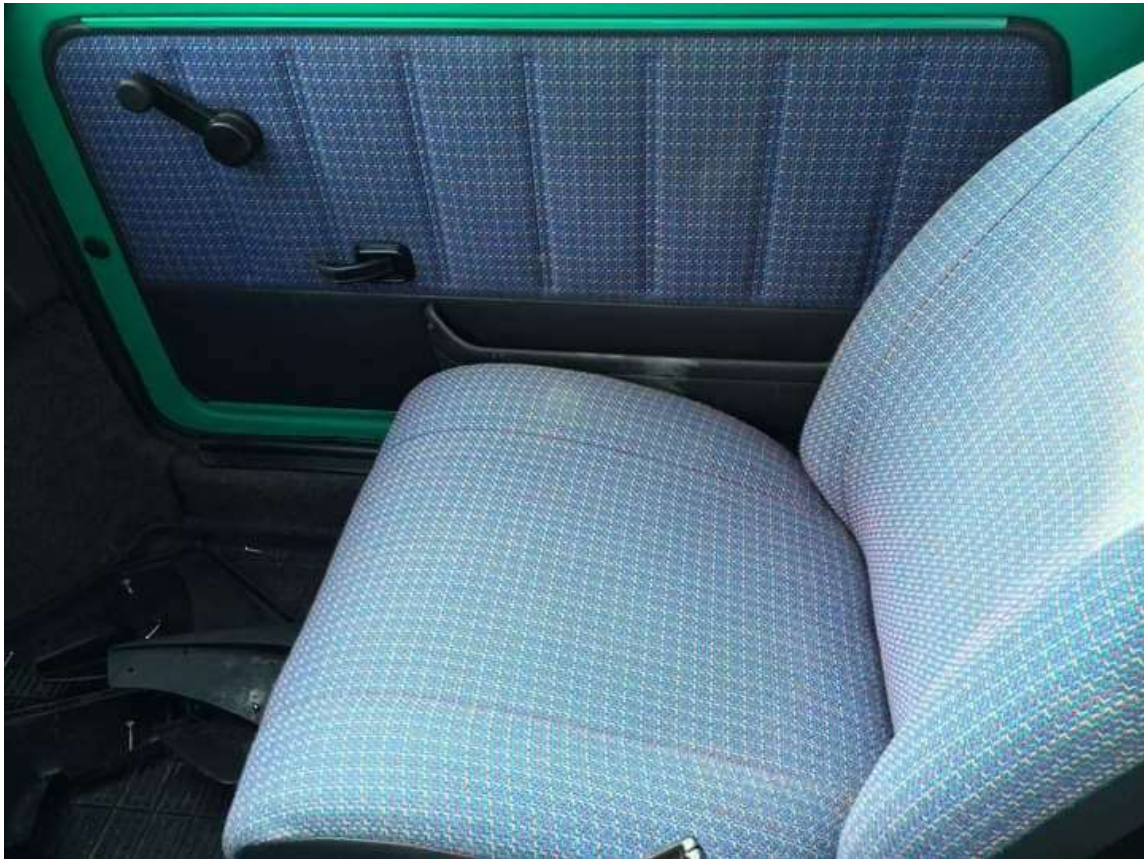
In 1994 the above but black became the base model:



The old anthracite was now grey and higher trim:



New blue version with new pattern for highest trim:



In 1996 the former grey became bluish grey and was base trim, and the above was changed to a new grey pattern:



So in terms of the door panels, I would separate them into multiple models:

- Pre-1985 with 4 colors: black, beige, orange, green
- The (usually) lower trim design in black, anthracite, grey and bluish grey
- 1985 alternative design (“flat” striped version) with grey or brown stripes
- Post 1994 (usually) higher trim with grey, black, “new” grey and “new” blue patterns

We can make all colors and patterns available on all versions, these just need different models.

Rear interior panels could also be made and use the same textures.

SEATS

Until 1985, leather seats in the same 4 colors you have seen before.

1985 until 1993, seats made of the same materials you see in the door cards part.

1993 base seats were anthracite leather you have seen above. Higher trim was leather with velvet in the middle:



Highest trim seats had leather base but full fabric top and black headrests:



In 1994 for some reason everything aside from highest trim was full leather, black or grey, no patterns. Highest trim had the same seat material as door panels, but base was still leather:



1996 base trim had full leather no pattern bluish grey seats with headrests of the same color, while higher trim had these seats with leather base and headrests but fabric top:



So we basically need 3 types of seats:

- Full leather in black, beige, orange, green, anthracite, grey and bluish grey
- Full fabric in Écru or grey colors
- Half leather half fabric in 3 patterns same as door panels, + a version that has velvet in the middle
- And only black leather headrests, can't find other colors except on export versions lol

AFTERMARKET SEATS (model not made)

Idk if you want to do the model for them, probably not but I'll show the options anyway.

1989-1994 patterns:

- Everything black fabric with white stripes except sides are black leather:



- Everything white leather + black fabric stripes:



- Everything black fabric with red stripes except sides are black leather:



- Blue version of above



- Alternative version



- Purple version



- Red version of the blue version



- Special corduroy version exclusive to convertible sport version of the car, not sold separately



1993-1994 version:



1994-1996 version:



That's a ton of different design, tbh to me only the generic blue and the cool convertible sport version would be enough lol